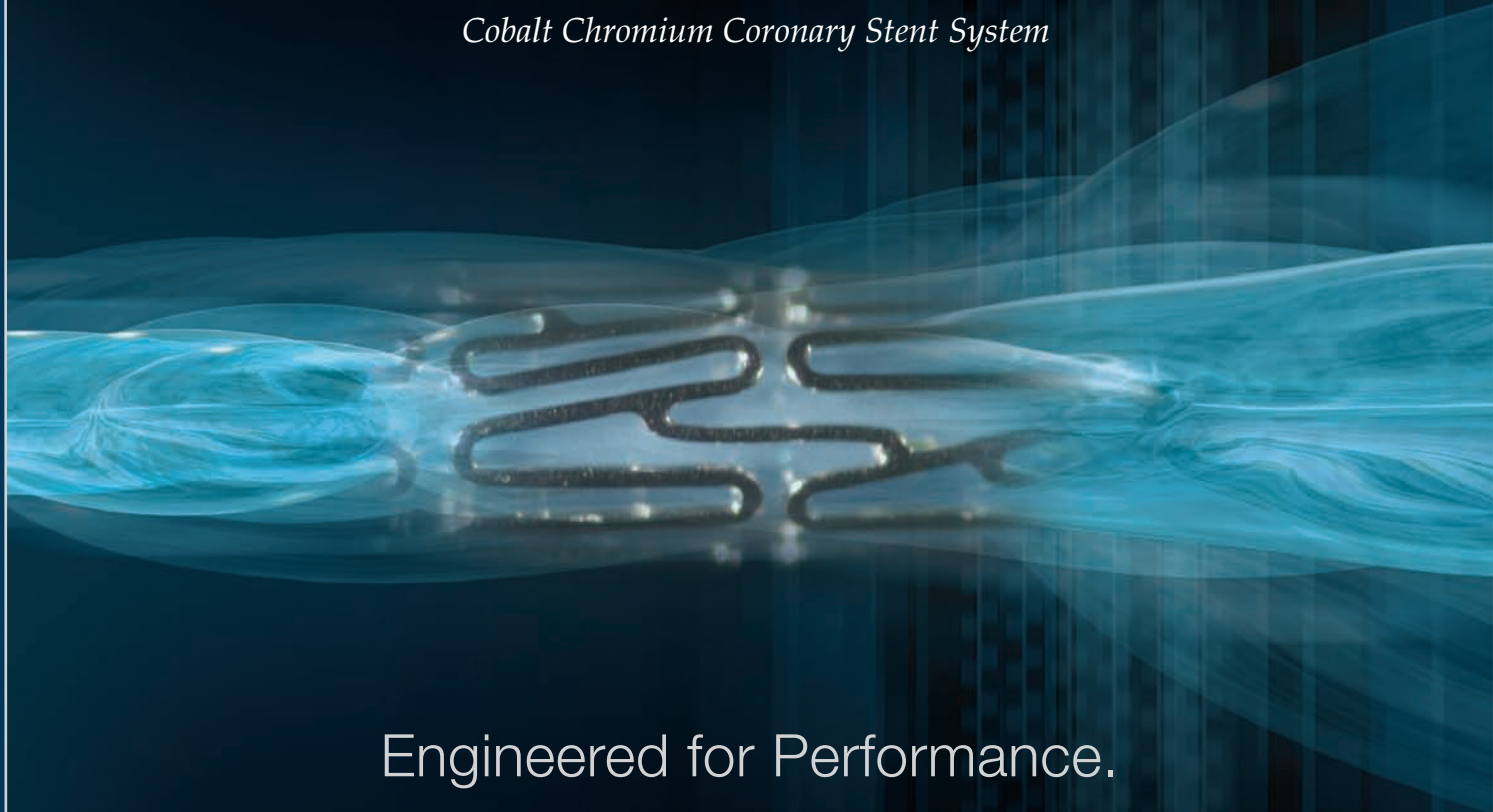


ProZeta™

Cobalt Chromium Coronary Stent System

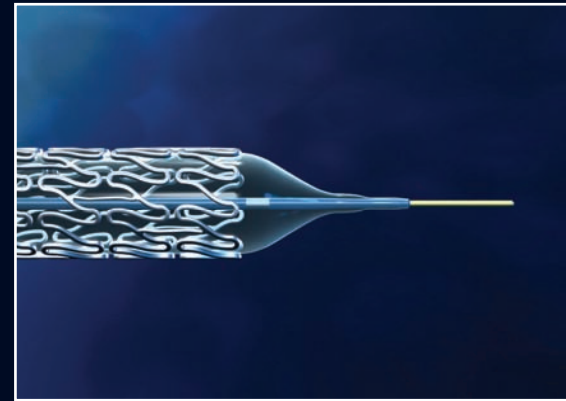


Engineered for Performance.

VASCULAR
c o n c e p t s
...The Innovations Company

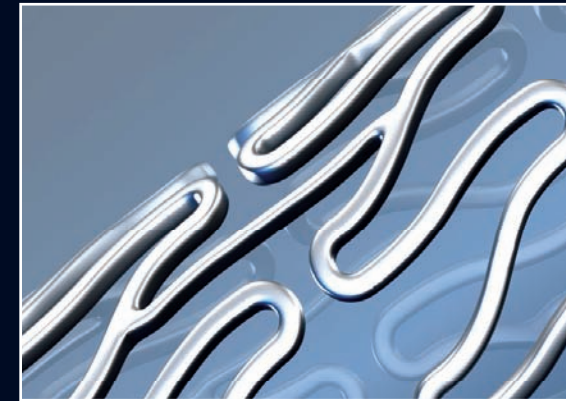
ProZeta: Cobalt Chromium Coronary Stent System

- Cobalt chromium slotted tube, open cell design with three interlinks per segment
- Nine zigzag elements around the circumference ensures expansion range of 2.25mm to 4.00mm
- Excellent longitudinal flexibility with Anatomically Conforming Radial Strength (ARCS)
- Optimal strut thickness of 65 μm ensures radioopacity both before and after expansion
- Crossing profile of 0.036" and 5 F guide catheter compatibility ensures uncompromised deliverability



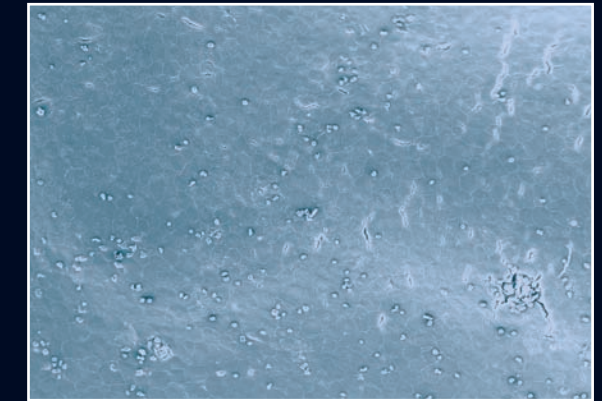
DELIVERABILITY

A tapered balloon fused into a flexible tip ensures smooth placement into the lesion



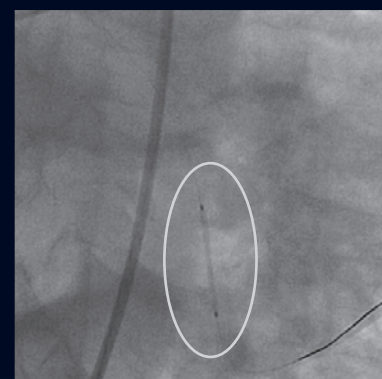
FLEXIBILITY

ProZeta is engineered with unparalleled flexibility due to the pivoted articulation design

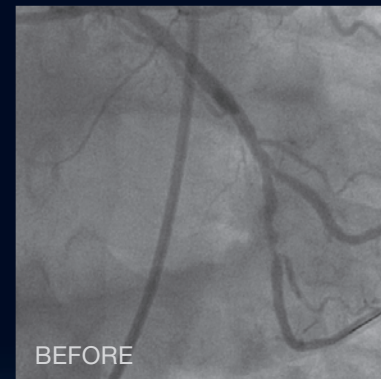


RELIABILITY

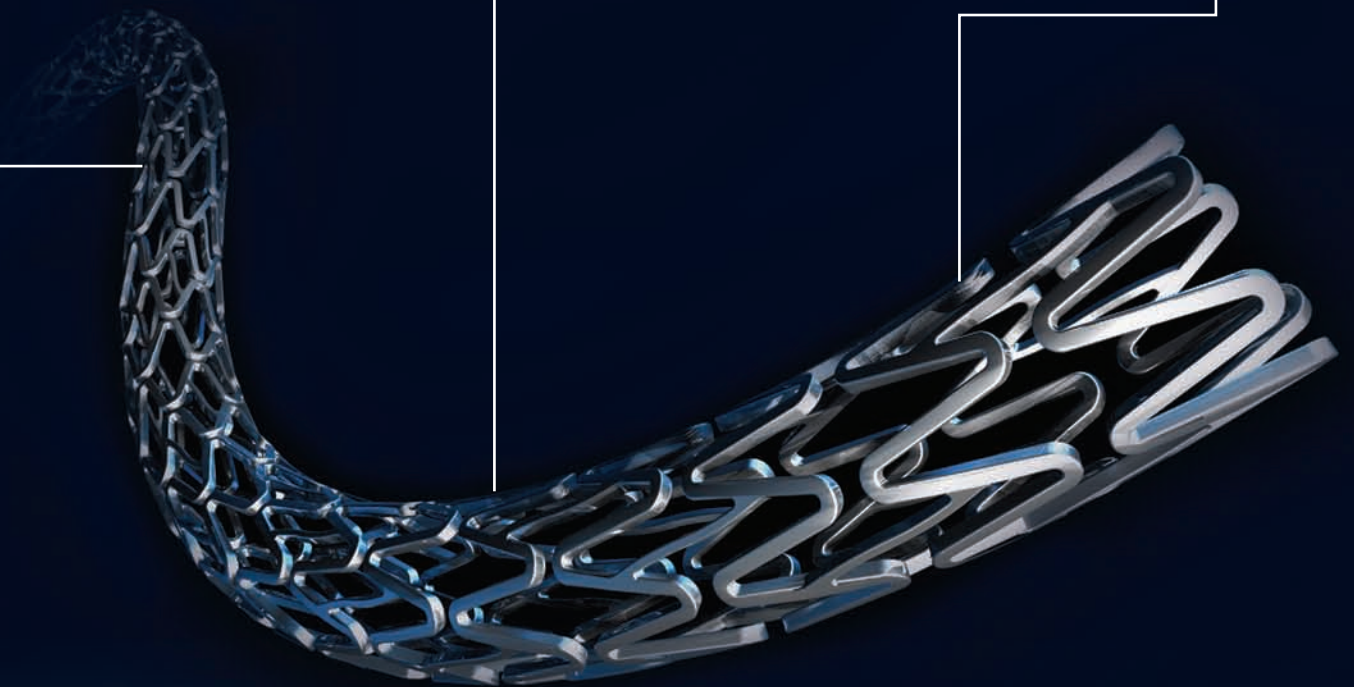
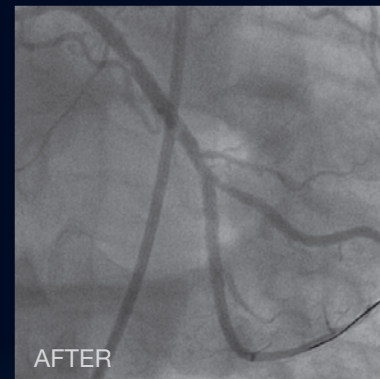
14 day endothelialization studies demonstrate complete endothelial coverage in a porcine coronary model demonstrating complete healing of the stent



Radioopacity of the ProZeta stent system before implantation.



Pivoted articulation design provides an anatomically conforming radial strength post implantation in a diffused distal disease of a patient.



ProZeta Technical Data

| PRESSURE [Mpa/atm] | COMPLIANCE [mm] | | | | | | | |
|-----------------------|-----------------|------|------|------|------|------|------|------|
| | STENT I.D (mm) | 2.25 | 2.5 | 2.75 | 3.00 | 3.25 | 3.50 | 4.00 |
| 0.6 / 6 | | 2.20 | 2.42 | 2.68 | 2.92 | 3.18 | 3.40 | 3.92 |
| 0.7 / 7 | | 2.23 | 2.46 | 2.71 | 2.96 | 3.22 | 3.45 | 3.96 |
| 0.8 / 8 | | 2.25 | 2.50 | 2.75 | 3.00 | 3.25 | 3.50 | 4.00 |
| 0.9 / 9 | | 2.28 | 2.53 | 2.78 | 3.03 | 3.28 | 3.55 | 4.04 |
| 1.0 / 10 | | 2.30 | 2.56 | 2.81 | 3.06 | 3.32 | 3.59 | 4.09 |
| 1.1 / 11 | | 2.33 | 2.59 | 2.84 | 3.09 | 3.35 | 3.62 | 4.12 |
| 1.2 / 12 | | 2.36 | 2.62 | 2.86 | 3.12 | 3.38 | 3.65 | 4.15 |
| 1.3 / 13 | | 2.39 | 2.65 | 2.89 | 3.14 | 3.41 | 3.69 | 4.19 |
| 1.4 / 14 | | 2.42 | 2.68 | 2.91 | 3.17 | 3.44 | 3.72 | 4.23 |
| 1.5 / 15 | | 2.46 | 2.71 | 2.94 | 3.20 | 3.47 | 3.76 | 4.27 |
| 1.6 / 16 | | 2.50 | 2.74 | 2.97 | 3.22 | 3.50 | 3.80 | 4.31 |
| 1.7 / 17 | | 2.54 | 2.78 | 3.00 | 3.25 | 3.53 | 3.84 | 4.36 |
| 1.8 / 18 | | 2.60 | 2.82 | 3.03 | 3.28 | 3.56 | 3.89 | 4.40 |
| 1.9 / 19 | | 2.66 | 2.86 | 3.07 | 3.32 | 3.59 | 3.94 | 4.45 |
| 2.0 / 20 | | 2.75 | 2.92 | 3.11 | 3.35 | 3.63 | 4.00 | 4.50 |

Nominal Pressure at 8 atm [0.8 MPa]

RATED BURST PRESSURE

ProZeta Ordering Information

| LENGTH (mm) | DIAMETER (mm) | | | | | | | |
|----------------|---------------|---------|---------|---------|---------|---------|---------|---------|
| | 2.00 | 2.25 | 2.50 | 2.75 | 3.00 | 3.25 | 3.50 | 4.00 |
| 8 | PZ20008 | PZ22508 | PZ25008 | PZ27508 | PZ30008 | PZ32508 | PZ35008 | PZ40008 |
| 10 | PZ20010 | PZ22513 | PZ25010 | PZ27510 | PZ30010 | PZ32510 | PZ35010 | PZ40010 |
| 13 | PZ20013 | PZ22513 | PZ25013 | PZ27513 | PZ30013 | PZ32513 | PZ35013 | PZ40013 |
| 16 | PZ20016 | PZ22516 | PZ25016 | PZ27516 | PZ30016 | PZ32516 | PZ35016 | PZ40016 |
| 18 | PZ20018 | PZ22518 | PZ25018 | PZ27518 | PZ30018 | PZ32518 | PZ35018 | PZ40018 |
| 23 | PZ20023 | PZ22523 | PZ25023 | PZ27523 | PZ30023 | PZ32523 | PZ35023 | PZ40023 |
| 28 | PZ20028 | PZ22528 | PZ25028 | PZ27528 | PZ30028 | PZ32528 | PZ35028 | PZ40028 |
| 33 | PZ20033 | PZ22533 | PZ25033 | PZ27533 | PZ30033 | PZ32533 | PZ35033 | PZ40033 |
| 38 | PZ20038 | PZ22538 | PZ25038 | PZ27538 | PZ30038 | PZ32538 | PZ35038 | PZ40038 |



www.vascularconcepts.com

Manufactured By:
 Vascular Concepts Limited
 2 Deans Hall Business Park
 Oak Road, Little Maplestead
 Halstead, Essex C09 2RT
 United Kingdom
 Tel: 01787 477199
 Fax: 01787 477510



Vascular Concepts Limited
 No. 19, SV Complex (1st Floor)
 Bellary Road, Hebbal
 Bangalore 560 024
 INDIA
 Tel: (080) 23438146-49
 Fax: (080) 23439205