

ProLink LP™

Thin Strut Technology

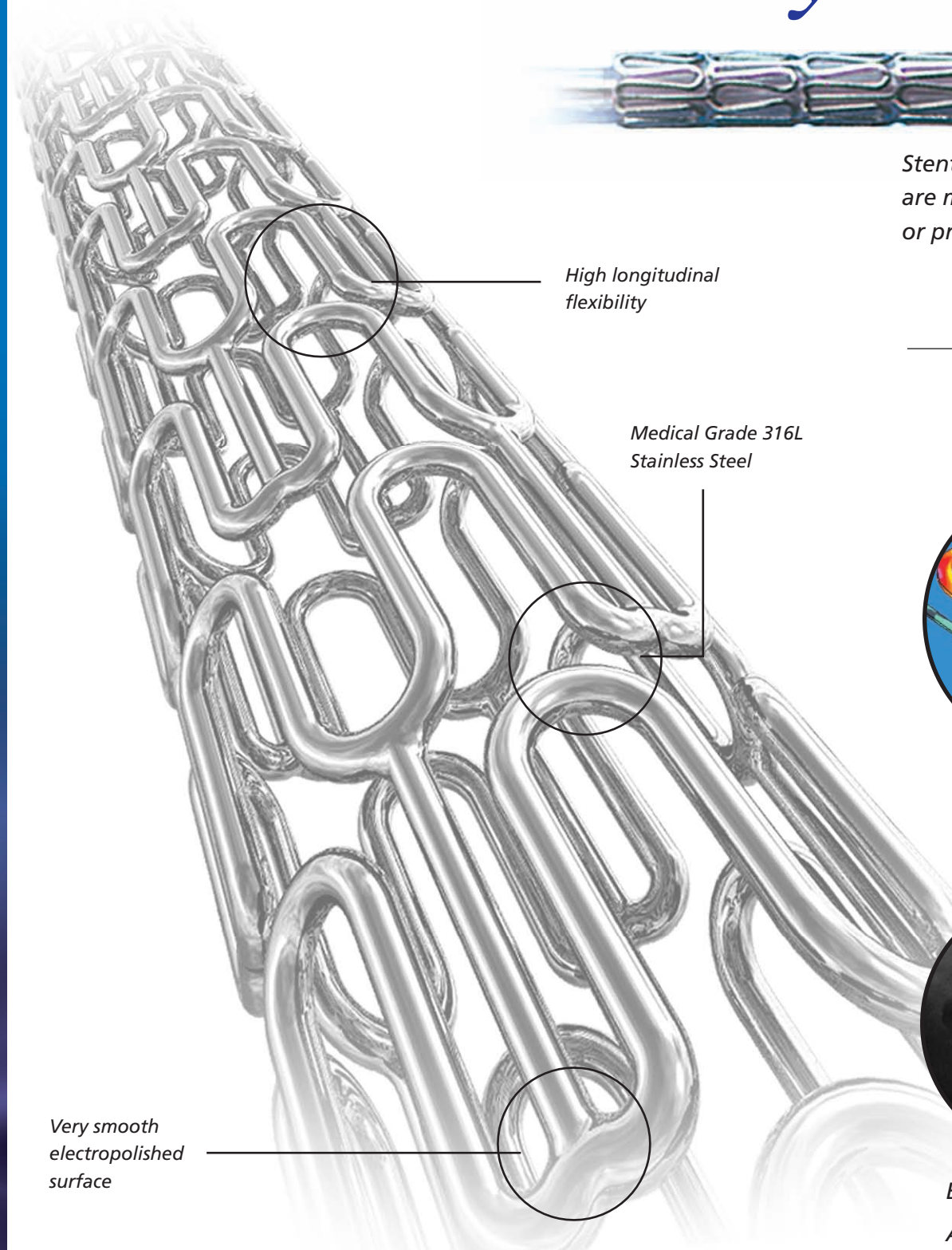


VASCULAR
c o n c e p t s

Balloon Expandable Coronary Stent and Stent System

Features

- Medical Grade 316L Stainless Steel
- Low Strut thickness and strut width (0.0095mm/0.0037")
- High longitudinal flexibility
- Excellent side branch access
- Very smooth electropolished surface
- Very low Crimped profile (0.0037" for a 3mm stent system)
- Flexibility and low profile allows direct stenting
- Excellent conformability to the vessel wall
- No plaque prolapse at implanted sites
- 18 atm burst pressure delivery system
- 6F guide catheter compatibility
- Ability to cross 99% of occluded vessels
- Stent length and balloon length are matched ensuring no overhang



High longitudinal flexibility

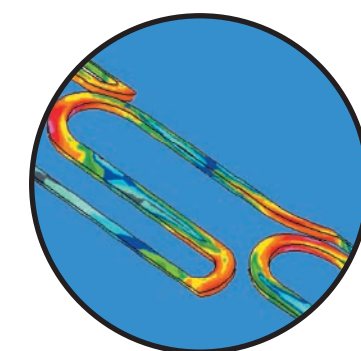
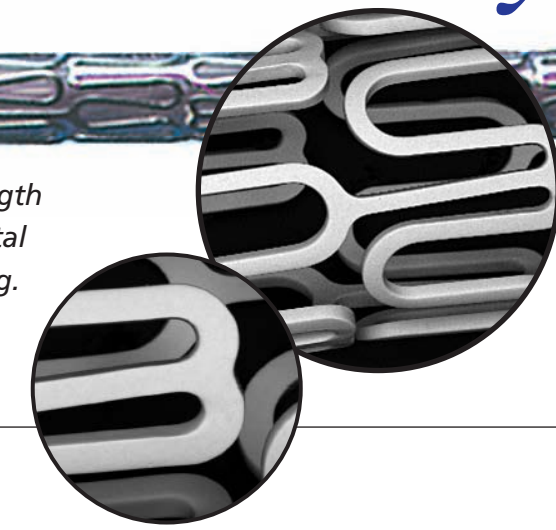
Medical Grade 316L Stainless Steel

Very smooth electropolished surface



Stent length and balloon length are matched ensuring no distal or proximal balloon overhang.

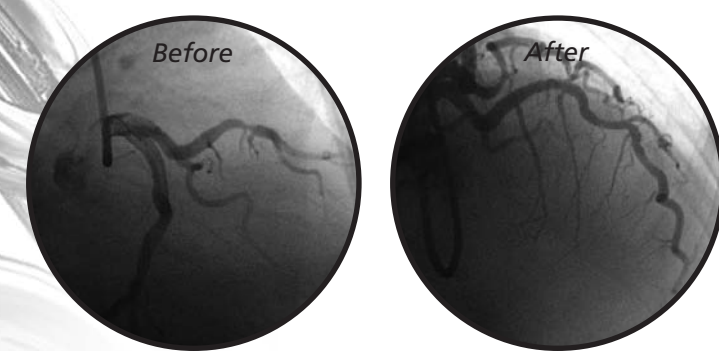
Quality control on each stent and stent system ensures no surface defects and high retention force between balloon and stent.



FEM analysis of ProLink LP demonstrates the stress/strain zones of "Thin Strut Technology."

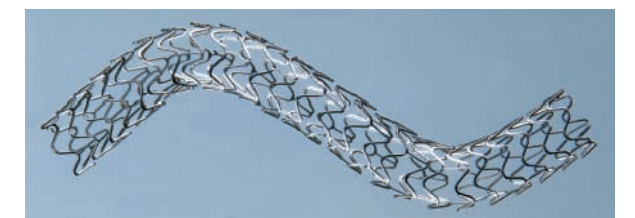


Stents are well-healed with a thin neointima.



Before: A very tortuous lesion in a patient.
After: Direct stenting with ProLink Combo.

A fully expanded stent has even expansion of the corrugations and no flaring of the ends.



Manufactured By:
 Vascular Concepts Limited
 2 Deans Hall Business Park
 Oak Road, Little Maplestead
 Halstead, Essex C09 2RT
 United Kingdom
 Tel: 01787 477199
 Fax: 01787 477510



Vascular Concepts Limited
 No. 19, SV Complex (1st Floor)
 Bellary Road, Hebbal
 Bangalore 560 024
 INDIA
 Tel: (080) 23438146-49
 Fax: (080) 23439205

ProLink LP Technical Data

BALLOON [mm]	2.50	2.75	3.00	3.25	3.50	4.00
PRESSURE [Mpa/bar]						
0.2/2	2.42	2.66	2.92	3.17	3.42	3.92
0.3/3	2.44	2.68	2.94	3.18	3.44	3.94
0.4/4	2.46	2.71	2.96	3.21	3.46	3.96
0.5/5	2.48	2.73	2.98	3.23	3.48	3.98
0.6/6	2.50	2.75	3.00	3.25	3.50	4.00
0.7/7	2.51	2.77	3.02	3.26	3.52	4.03
0.8/8	2.52	2.79	3.06	3.27	3.56	4.07
0.9/9	2.54	2.81	3.08	3.29	3.59	4.09
1.0/10	2.56	2.84	3.11	3.31	3.62	4.11
1.1/11	2.59	2.86	3.13	3.33	3.65	4.13
1.2/12	2.61	2.88	3.16	3.35	3.68	4.17
1.3/13	2.64	2.90	3.19	3.37	3.71	4.22
1.4/14	2.66	2.92	3.22	3.40	3.74	4.26
1.5/15	2.69	2.94	3.26	3.43	3.77	4.29
1.6/16	2.72	2.96	3.29	3.45	3.80	4.34
1.7/17	2.75	2.99	3.33	3.47		
1.8/18	2.79	3.00	3.36			
1.9/19	2.81					

Nominal pressure at 6 BAR [0.6 Mpa]

RATED BURST PRESSURE

ProLink LP Ordering Information

STENT LENGTH	STENT DIAMETER					
	2.50 mm	2.75 mm	3.00 mm	3.25 mm	3.50 mm	4.00 mm
10	PLP2510	PLP27510	PLP3010	PLP32510	PLP3510	PLP4010
15	PLP2515	PLP27515	PLP3015	PLP32515	PLP3515	PLP4015
20	PLP2520	PLP27520	PLP3020	PLP32520	PLP3520	PLP4020
25	PLP2525	PLP27525	PLP3025	PLP32525	PLP3525	PLP4025
30	PLP2530	PLP27530	PLP3030	PLP32530	PLP3530	PLP4030